

Classification	NAPOPC_CE5 FAQ				No.	1-003-E	
Author	James	Version	1.0.0	Date	2010/7/12	Page	1/2

How to connect WinPAC and ViewPAC to WinPAC and ViewPAC via NAPOPC DCOM settings?

Applies to:

Platform	OS version	NAPOPC version
WinPAC/ViewPAC	CE5	NAPOPC_CE5 v2.20

In this case, WinPAC/ViewPAC is the OPC Client and WinPAC/ViewPAC is the OPC Server. Set up DCOM settings of both WinPAC/ViewPAC (Client) and WinPAC/ViewPAC (Server) first, and then WinPAC/ViewPAC (Client) could take the data from NAPOPC_CE5 of WinPAC/ViewPAC (Server) by the OPC Client program:

Step 1:

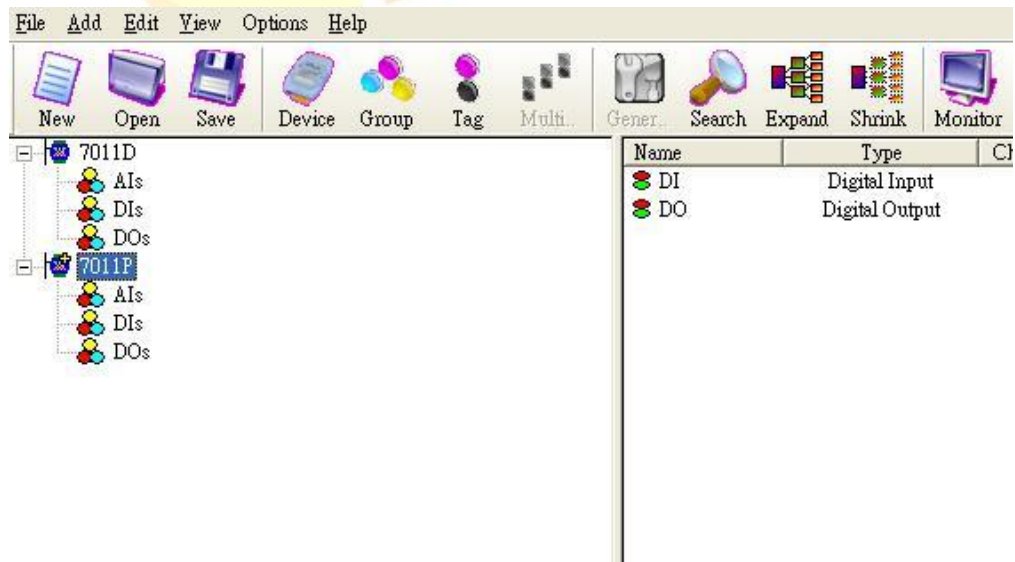
Accomplish DCOM settings of WinPAC/ViewPAC (Server). Please refer to **NAPOPC_CE5 manual 3.2.1**.

Step 2:

Accomplish DCOM settings of WinPAC/ViewPAC (Client). Please refer to **NAPOPC_CE5 manual 3.2.4**.

Step 3:

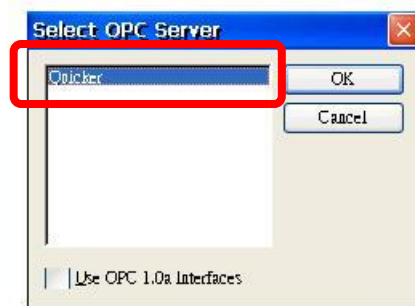
Edit your NAPOPC_CE5 project on WinPAC/ViewPAC (Server).



Classification	NAPOPC_CE5 FAQ				No.	1-003-E	
Author	James	Version	1.0.0	Date	2010/7/12	Page	2/2

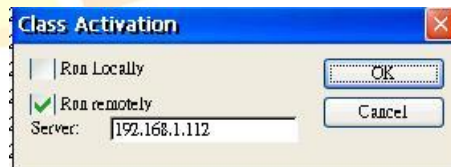
Step 4:

Execute your OPC Client program on [WinPAC/ViewPAC \(Client\)](#), and connect it to [NAPOPC_CE5 of WinPAC/ViewPAC \(Server\)](#). Furthermore, you could exchange data between WinPAC/ViewPAC and WinPAC/ViewPAC. In following capture, the OPC Client program is **CimQuest INGEAR**.



NOTE:

1. The User Account of both Server and Client must be the same. Please pay attention to it when you set User Account.
2. Please notice to select “[Class](#)” button of “[DCOM Configuration Utility](#)” to setup “[Class Activation](#)”.



- a. Uncheck “[Run Locally](#)” and check “[Run remotely](#)”
- b. Enter IP address of server site